

### Lenin Rising from a Chair, statuette in Silumin alloy, circa 1970s-80s.

Measures approximately 10 1/2" tall, the plinth is approx. 6 1/4" x 5". Rather heavy at over 4 1/2 lbs.

Lenin is depicted here in a very uncommon tense posture. He apparently had just had a eureka moment while reading a book and is now ready to jump out of his chair to turn this new idea into reality (this does not bode well first for the bourgeoisie and eventually to the entire population of the country). The cloth-covered chair suggests that the location is the Smolny Institute in Petrograd while it was the Bolsheviks' headquarters during the October Revolution.

In excellent condition, showing just barely noticeable tiny oxidation spots, and a couple of small scuffs to the left shoulder.

Please note, the medal in our last photo is for size reference.

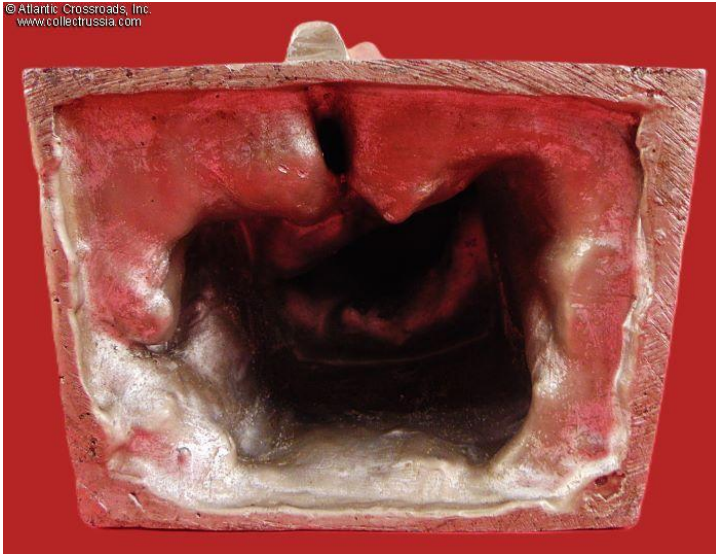
Item# 46308

**\$320.00**





© Atlante Crossroads, Inc.  
www.collectrusia.com



© Atlante Crossroads, Inc.  
www.collectrusia.com

