

Cambodia, Royal Order of Sahametrej, Grand Cross Set incl. breast star, sash w. sash badge, & ribbon of the order w. golden branch with brilliants, pinned to sash bow, cased.

The Breast Star. Silver gilt, enamel, 92.2 mm in height, 91.9 mm in width. The center medallion features a green enamel disk with a stylized petal design, surmounted by a Royal goblet with a sword lying on it. The reverse is plain, with a horizontal pin. Maker marked on one of the rays. In extremely fine condition, showing just one small contact point to the right of the bottom of the goblet. Judging by the looks of the enamel around it, it was a manufacturing accident, moving the enamel sideways while it was still wet.

The Sash Badge. Silver gilt, enamel, 60.6 mm in height (excl. crown), 57.7 mm in width. The height of the crown is 34.8 mm (incl. eyelet). Suspended from a link ring sewn onto the sash. The design is nearly identical to that of the star, the only difference being the green-enameled wreath connecting the rays around the center medallion. The reverse is plain. In excellent condition, no wear visible to the naked eye.

The Sash. In silk, 106 mm in width a bow approx. 17 cm across. In excellent, outstanding condition.

Breast ribbon of the order. Measures 14.6 mm in height, 42.4 mm in width. The golden branch with five brilliants is 34.1 mm long, glued to the silk of the ribbon.

The Presentation Case. Very large, 30 x 24 x 5 cm. In wood, covered in patterned fabric on the outside and lined with bright-red silk on the inside. In excellent condition, just minor fraying to the fabric at the corners, not too obvious or detractive.

The Royal Order of Sahametrej (Oder Royal du Sahametrej) was established on 9 September 1948 in three classes and raised to five classes in 1950. It was awarded for distinguished services to the King and the people of Cambodia, mostly in the field of external relations and diplomatic services. The order was dormant during the Khmer Rouge period, and was reinstated by Royal decree on 5 October 1995.

Item# 46245

\$950.00



© Atlanti Crossroads, Inc.
www.collectrusia.com



© Atlanti Crossroads, Inc.
www.collectrusia.com



© Atlanti Crossroads, Inc.
www.collectrusia.com

© Atlanti Crossroads, Inc.
www.collectrusia.com



© Atlantic Crossroads, Inc.
www.collectrusia.com



© Atlantic Crossroads, Inc.
www.collectrusia.com



© Atlantic Crossroads, Inc.
www.collectrusia.com



© Atlantic Crossroads, Inc.
www.collectrusia.com



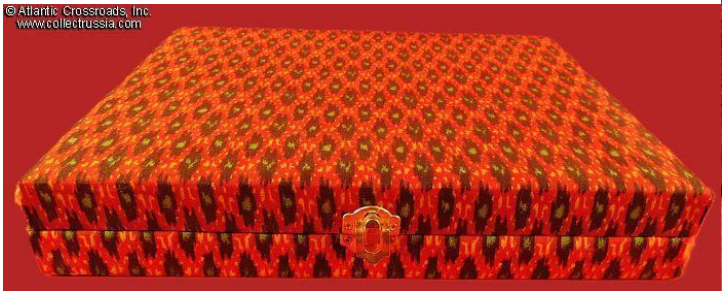
© Atlantic Crossroads, Inc.
www.collectrusia.com



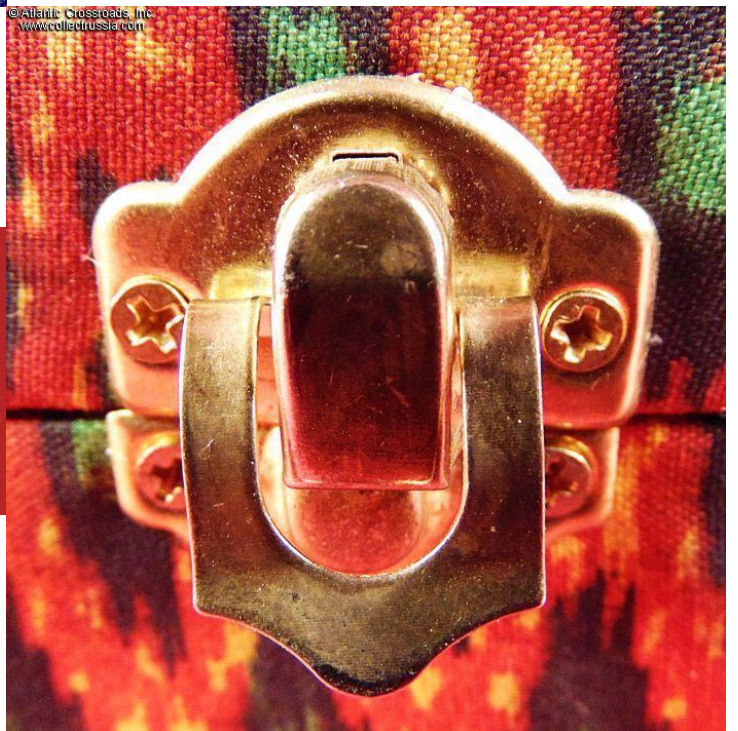
© Atlantic Crossroads, Inc.
www.collectrusia.com



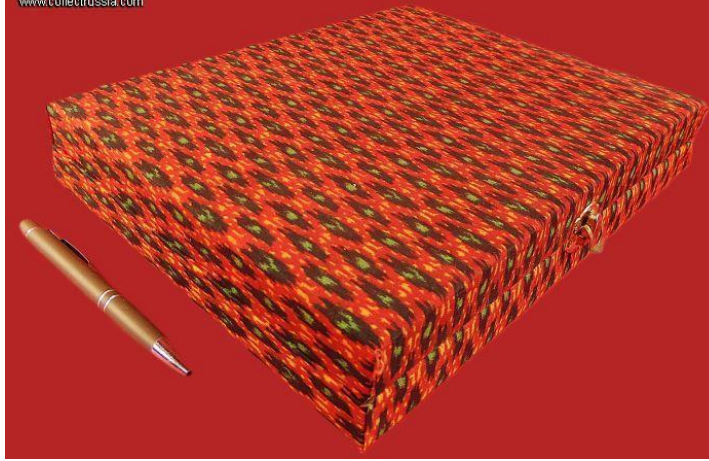
© Atlantic Crossroads, Inc.
www.collectrusia.com



© Atlantic Crossroads, Inc.
www.collectrusia.com



© Atlanti Crossroads, Inc.
www.collectrusia.com



© Atlanti Crossroads, Inc.
www.collectrusia.com

