

Soviet Navy Ship Magnetic Compass KM69-2, with Mount, 1978.

Stands 8" tall including the mount, 4" in diameter. Weighs a little over 5 lbs. Designed with a small viewing window and two attachment points at the sides for gimbal mounting. Metal housing is painted metallic gray; illumination is provided via a small light inserted under the hood in the back. For KM69-2, the power for the light is supposed to be sourced from the ship's circuitry. Attached to a pin inside a Plexiglas container filled with liquid, the dial is designed to remain horizontal in up to 30 degrees tilt. The metal decals screwed onto the foot of the mount indicate the model number, year of manufacture and other identifying information.

In excellent condition. The paint has just a couple of small scuffs and chips, the viewing window is clean, the dial swivels freely and seems to point correctly, although we did not do any precision testing and do not know how accurate it is. Documentation for this model cites allowed deviation of 3-5 degrees, depending on the pitching of the vessel.

A fine sample of Soviet Naval navigation equipment of the Cold War era, possibly in perfectly good working condition, and looking equally great on a collector's display of Soviet Naval gear and on a bookshelf with your favorite Naval thrillers.

Please note that the medal in our photo is for size reference.

Item# 42787

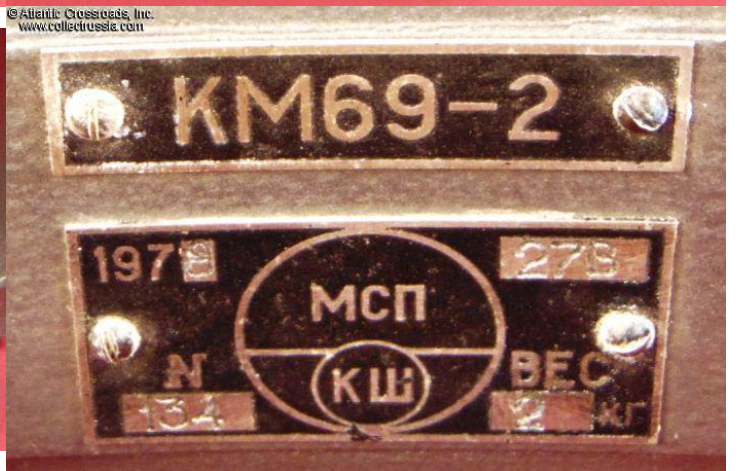
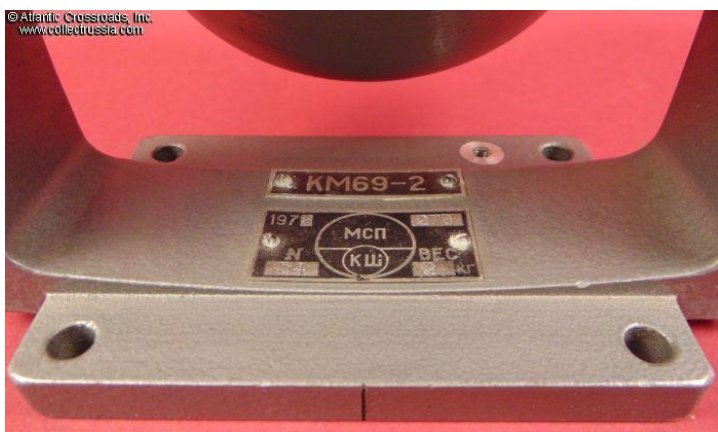
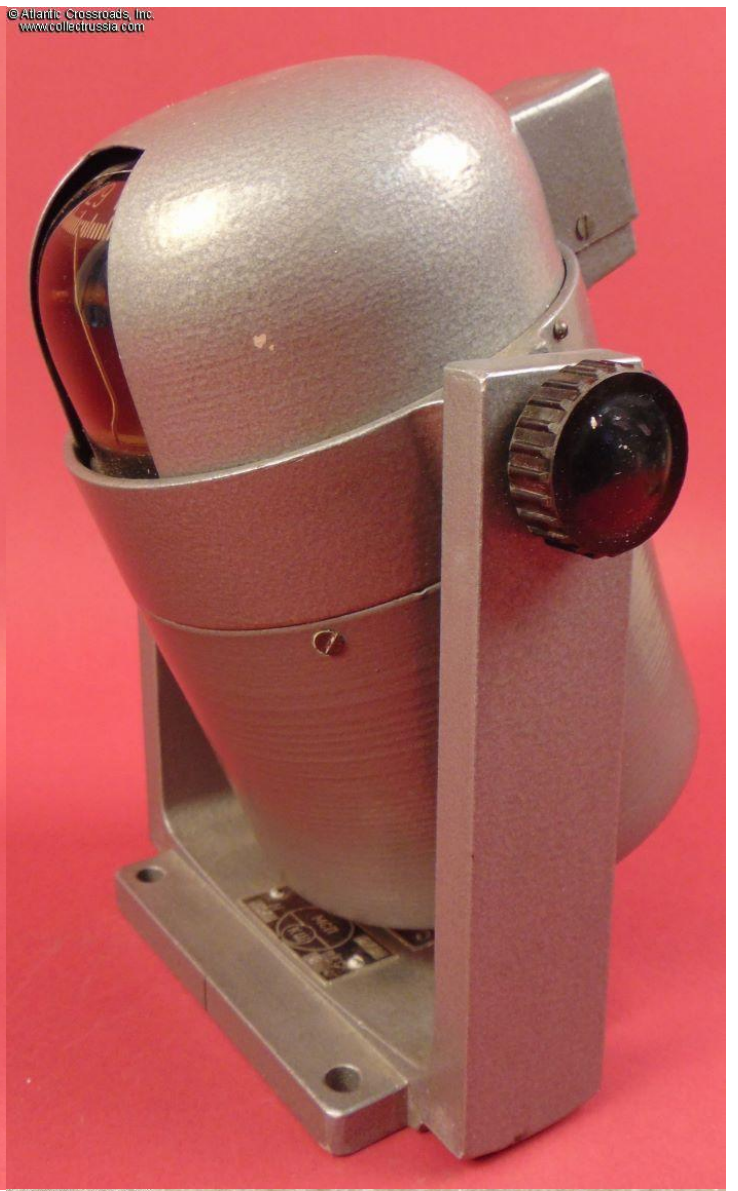
\$190.00

© Atlantic Crossroads, Inc.
www.collectrussia.com



© Atlantic Crossroads, Inc.
www.collectrussia.com





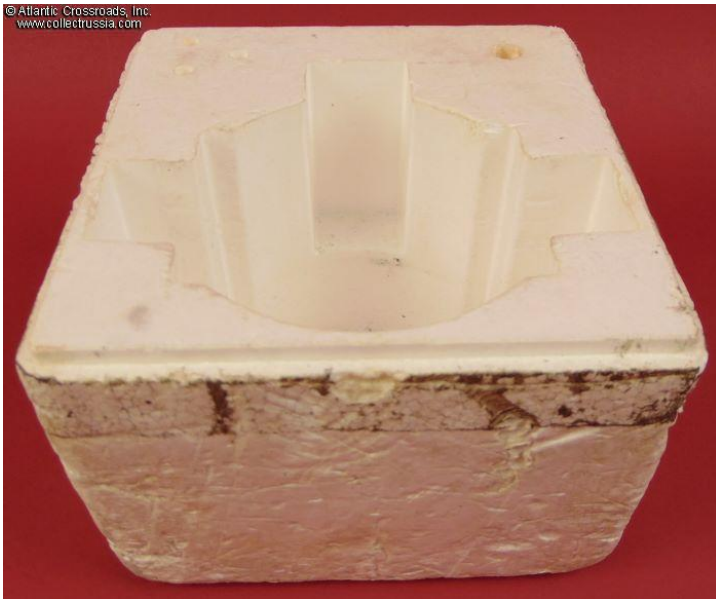
© Atlantic Crossroads, Inc.
www.collectrusia.com



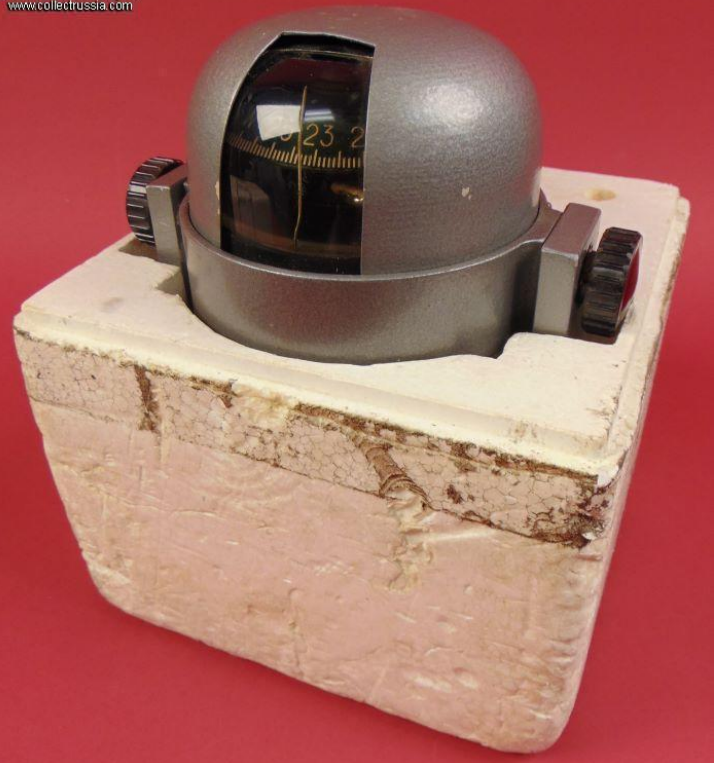
© Atlantic Crossroads, Inc.
www.collectrusia.com



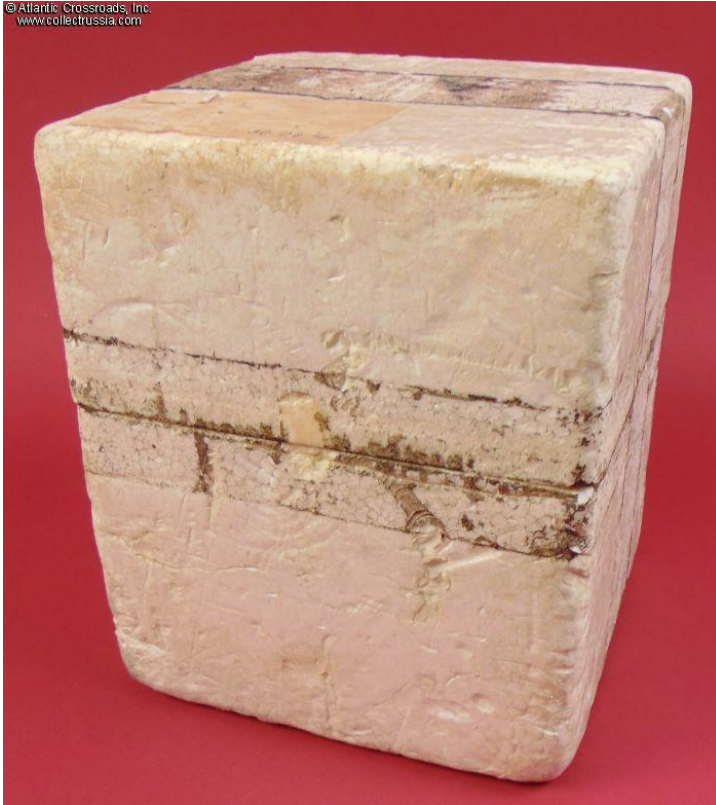
© Atlantic Crossroads, Inc.
www.collectrusia.com



© Atlantic Crossroads, Inc.
www.collectrusia.com



© Atlanti Crossroads, Inc.
www.collectrusia.com



© Atlanti Crossroads, Inc.
www.collectrusia.com

