

Portrait of Lenin, original painting, artist signed, oil/canvas, dated 1965.

Measures approx. 39" x 31.5" (100 x 80 cm). Original painting by Boris Popov, the artist's handwritten signature is on the verso. This artwork was acquired in a group of paintings by this artist and we guarantee its authenticity. The style of brushstrokes, the artist's "handwriting" also speaks for itself when comparing this portrait with other works by B. Popov. There is a paper tag of the RSFSR Art Export Salon of the USSR Arts Fund attached on verso, showing the title of the painting, name of the artist, size, and medium (oil on canvas).

Condition is fair to good: the portrait has been stored rolled and suffered significant loss of paint. There are also what looks like minor touch-up repairs. Nevertheless, the details are largely intact, and the painting is overall very presentable. Please note that it will be shipped rolled in a postal tube. The canvas is strong apart from the unavoidable raw edge wear.

This is a very unusual piece: the typical portraits of Lenin that appear on the market these days are copies of a few prototypes reproduced by thousands in countless workshops around the Soviet Union. Even to create a copy, the artist had to have certain credentials and receive an official permission. Many then used such a permission as a milk cow for easy money, and the work was done mostly by apprentices while the artist would only add a few touches, if any. In contrast to all the mass-produced vintage copies, this piece is an original work. During the Soviet era, it was very difficult for any artist to obtain a permission to create an original portrait of a Soviet leader, Lenin more than any other. The fact that Popov received such an authorization is a testimony to his extraordinarily high qualification.

Boris Nikanorovich Popov (Борис Никанорович Попов, 1909-2001) was a prominent Soviet Russian painter, master of graphic arts, theater stage decorator. He started his career in the early 1930s as a theater stage decorator, working in theaters of Vladivostok, Achinsk and other theaters of the Soviet Far East and Siberia. Following that, he moved on to painting, specializing in portraits and landscapes. He took part in a large number of art exhibitions, played an active role in the Moscow Chapter of the Union of Soviet Artists, and was made Distinguished Artist of RSFSR (a very high Soviet-era official title of recognition bestowed very sparingly). His works are on exhibit in museums of Moscow, Krasnoyarsk, Donetsk as well as in several private collections.

Please note that the 4.5-inch-tall bust of Lenin in one of our photos is for size reference.

Item# 40579

\$650.00



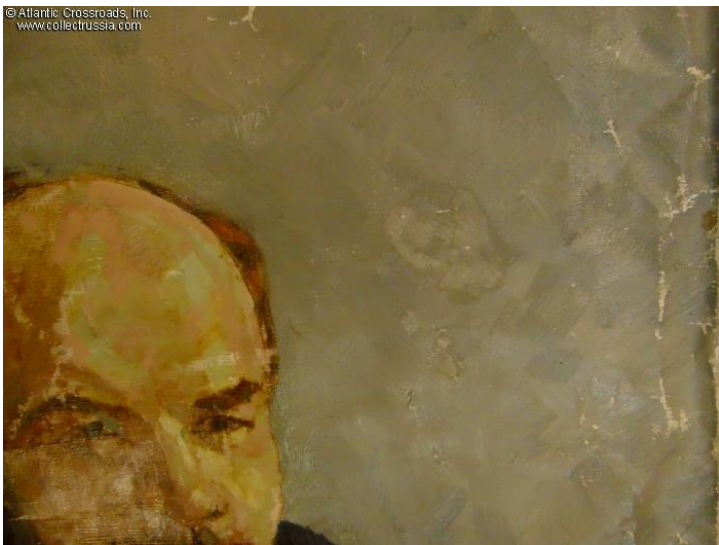
© Atlartie Crossroads, Inc.
www.collectrussia.com



© Atlartie Crossroads, Inc.
www.collectrussia.com



© Atlartie Crossroads, Inc.
www.collectrussia.com



© Atlartie Crossroads, Inc.
www.collectrussia.com

