

Lenin in Razliv, a table medal by Leningrad Mint, 1965.

In aluminum, measures 53 mm wide, 3.4 mm thick. The artwork is in 3D high relief, typical of the Soviet-era table medals. The medallier, A.V. Kozlov, rendered the imagery in an amazing level of detail. The obverse features the monument "Shelter in Razliv" erected exactly on the spot where Lenin spent some time in hiding in 1917. The inscription below the image states exactly that: "Monument "Shelter in Razliv" on the spot where V.I. Lenin was in hiding in 1917". The obverse presents a scene with Lenin sitting at a tree stump near the shelter, writing.

In excellent condition. Very light layer of patina enhances the 3D effect of the artwork. There are no significant scuffing, staining, scratches, knocks or any other damage. Only the rim shows traces of wear, and minuscule ones at that.

The monument was erected in 1928. Its location is on the outskirts of the city of Sestroretsk near St. Petersburg. Lenin spent there a few weeks in a hut-like shelter hiding from the Provisional Government which had issued an arrest warrant accusing him (rightfully so!) of being a German spy.

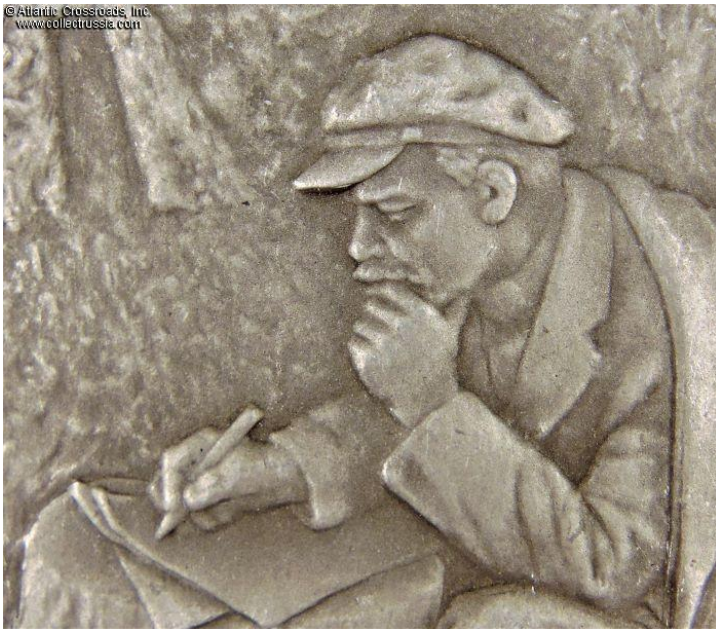
Please note that the penny in our photo is is for size reference.

Item# 39764

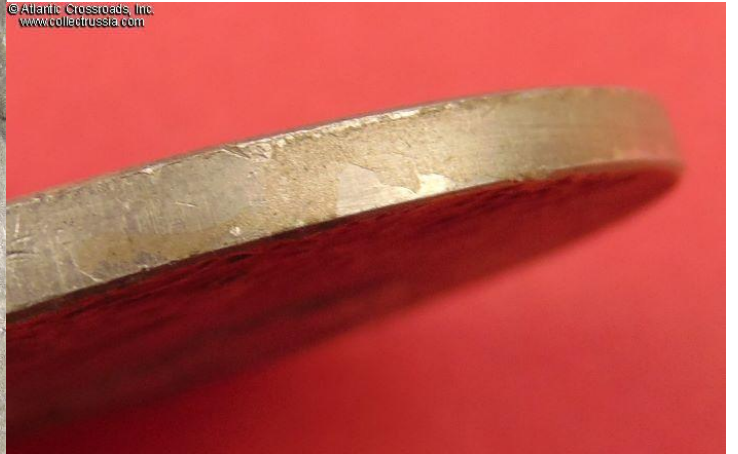
\$40.00



© Atlantic Crossroads, Inc.
www.collectrusia.com



© Atlantic Crossroads, Inc.
www.collectrusia.com



© Atlantic Crossroads, Inc.
www.collectrusia.com

