

Portrait of Lenin, oil on canvas, circa 1960s-80s.

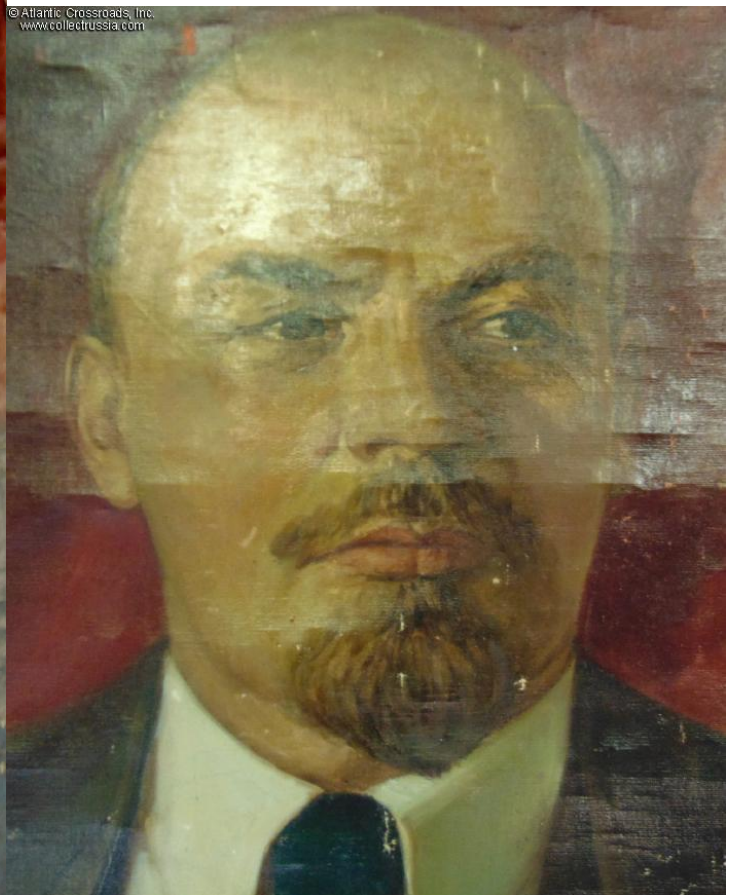
Massive size: 61 in x 44 in (approx. 5'x 3 3/4'). The verso has a trace of what was probably the requisite paper label showing the acceptance committee marking as was required at the time of any artwork portraying any of the Soviet leaders.

In fair to good condition. Shows age and paint chipping throughout, in part from long term rolled storage. There are some relatively minor creases in the canvas. Some small puncture holes, mostly along the edge from being mounted on a frame. Overall impression is still there, an easy repair for an artist or skilled amateur.

Judging by its huge size, this portrait must have once decorated the foyer or grand banquet room in some important Soviet government building. Even in its present, admittedly far less than perfect condition, it will create a stunning background for the serious Soviet collection, especially if properly framed. It is certainly the largest portrait of Lenin we've offered in the past decade.

Item# 36545

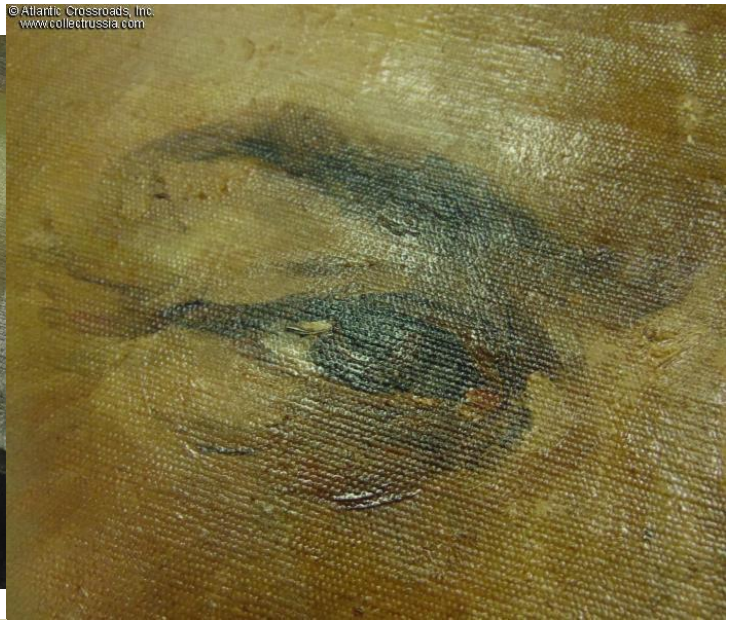
\$380.00



© Atlantic Crossroads, Inc.
www.collectrussia.com



© Atlantic Crossroads, Inc.
www.collectrussia.com



© Atlantic Crossroads, Inc.
www.collectrussia.com



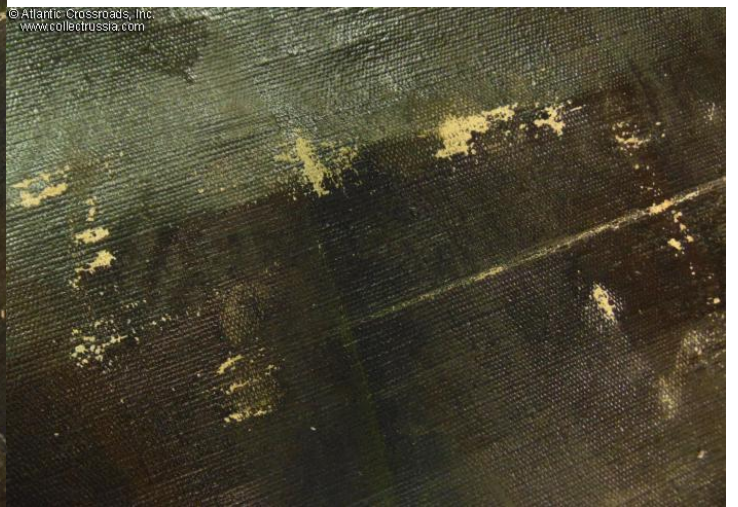
© Atlantic Crossroads, Inc.
www.collectrussia.com



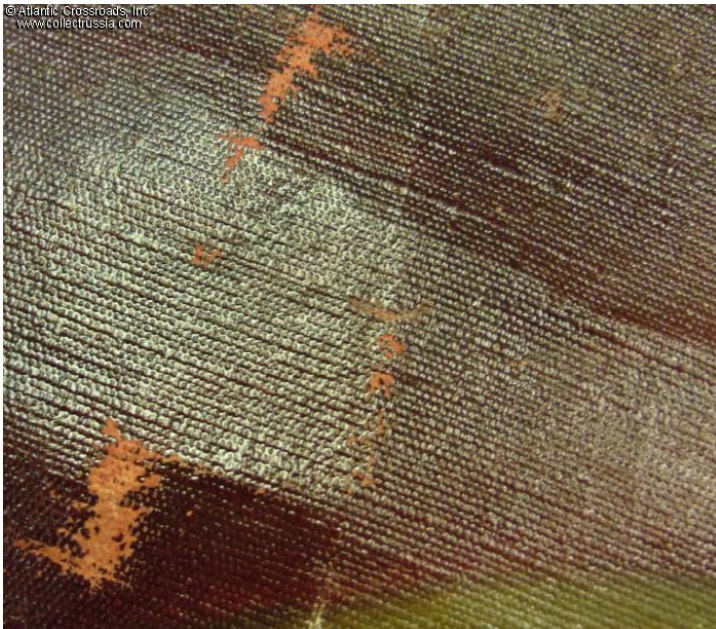
© Atlantic Crossroads, Inc.
www.collectrussia.com



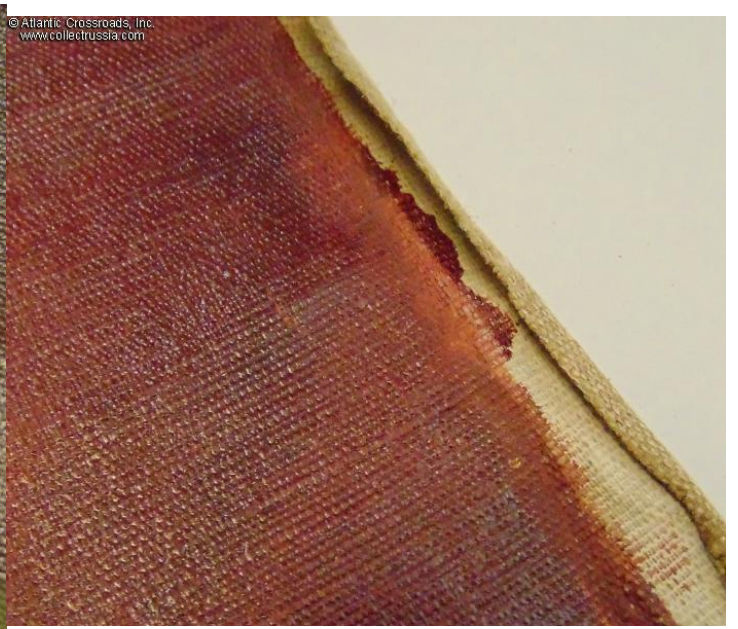
© Atlantic Crossroads, Inc.
www.collectrussia.com



© Atlantic Crossroads, Inc.
www.collectrusia.com



© Atlantic Crossroads, Inc.
www.collectrusia.com



© Atlantic Crossroads, Inc.
www.collectrusia.com



© Atlantic Crossroads, Inc.
www.collectrusia.com

