



Shock Worker of Stalin Labor Campaign badge, mid-940s.

Brass and enamels; 33.7 mm tall (including the upper flagpole finial), 34.0 mm wide. The artwork includes steam engine locomotive under red banners with "Stalin" written on the front and stylized sickle and hammer emblem surrounding the locomotive. This is a WW2 version of the badge featuring silver finish on the locomotive, cogwheel and the reverse of the badge; thick screw post (about 3.8 mm in diameter); and black enamel in the lettering around the sickle. Excellent quality.

In outstanding, excellent condition. The enamel shows beautiful luster and is completely free of the usual chips, noticeable wear or significant flaking. There are only a couple microscopic flakes at the upper edges of the banners that are unnoticeable to the naked eye. The enamel appears perfect without magnification. The details of the artwork are likewise perfect and crisp; the silver finish is exceptionally well preserved having only very minimal, barely detectable wear to the highest points of the locomotive. The silver plating on the reverse is perfect. The screw post is full length, over 12.5 mm long, and includes original washer and original pre-1947 screw plate maker marked "ShMZ NKPS" ("Mechanical Stamping Factory, Narkomat of Railroad Transportation").

Although this badge is not a particularly scarce award, it is hard to find in as great a condition as the example offered here.

/See V. Krivtsov, *Avers 8 - Catalog of Soviet Badges and Jettons*, fig. 741b/.

Item# 36540

\$50.00

© Atlantic Crossroads, Inc.
www.collectrussia.com



© Atlantic Crossroads, Inc.
www.collectrussia.com



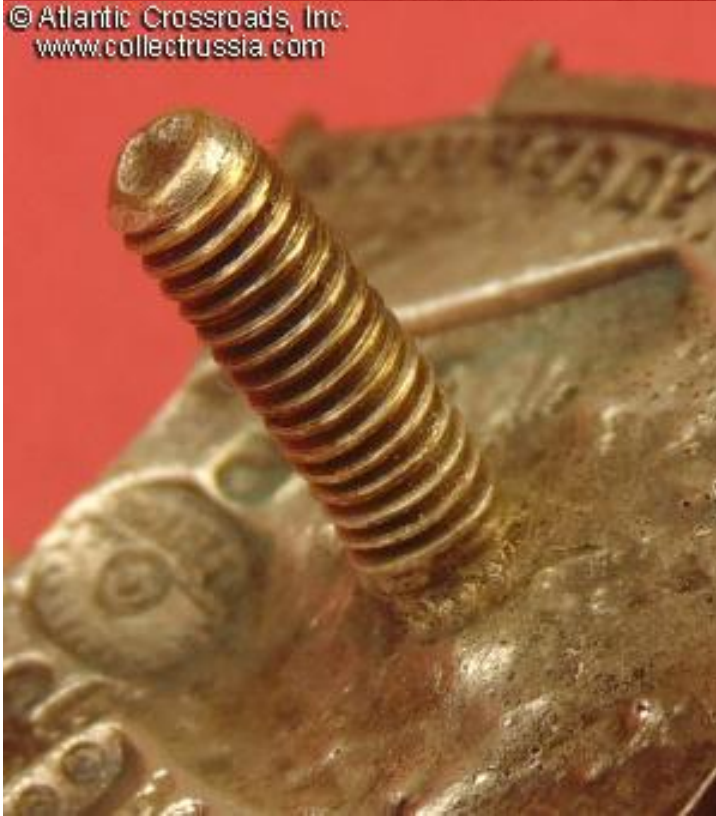
© Atlantic Crossroads, Inc.
www.collectrussia.com



© Atlantic Crossroads, Inc.
www.collectrussia.com



© Atlantic Crossroads, Inc.
www.collectrussia.com



© Atlantic Crossroads, Inc.
www.collectrussia.com

